

NØRR

QUARTIER D'ARCHITECTURE SCANDINAVE



FREYA

UNIFAMILIAL - TYPE C (ABRI AUTO)

©Tous droits réservés

TALO

CHABOT
CONSTRUCTION



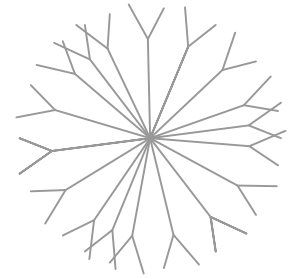
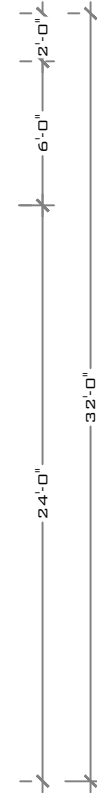
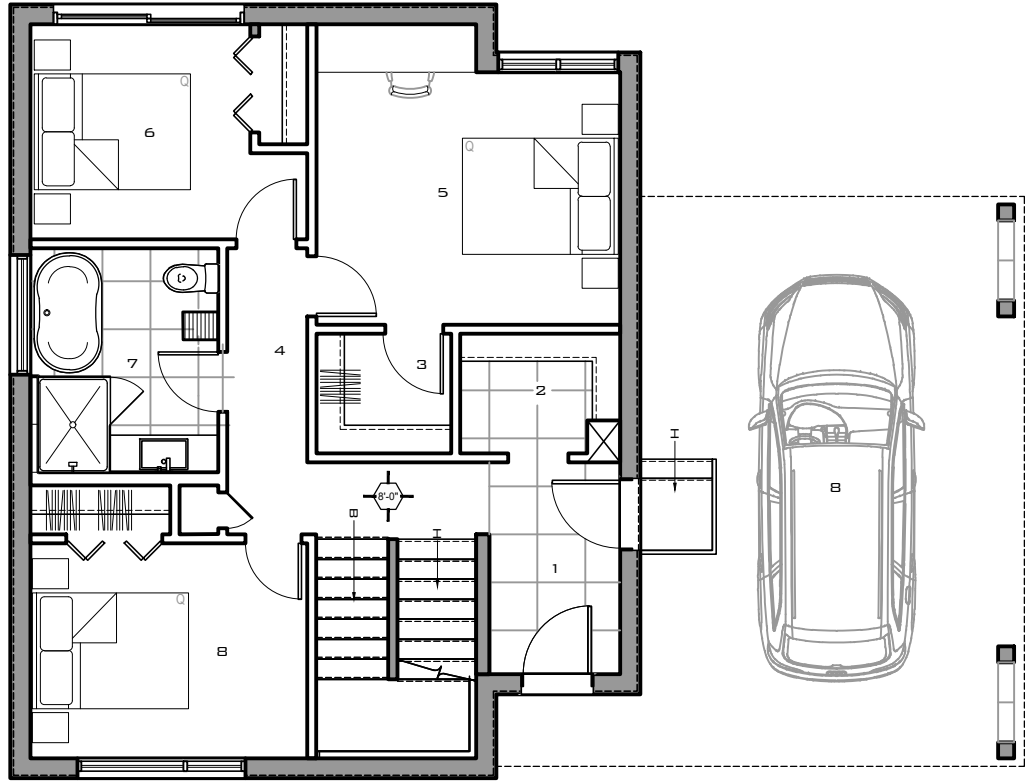
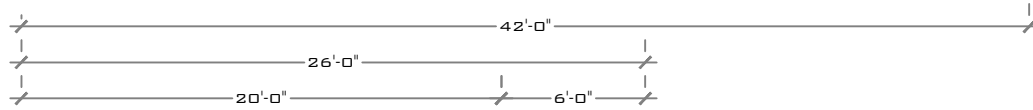
CORTEN
CONSTRUCTION

1	HALL D'ENTRÉE	5'-6"	X	8'-10"
2	WALK-IN	6'-7"	X	5'-0"
3	WALK-IN	5'-7"	X	5'-0"
4	CIRCULATION	3'-7"	X	11'-11"
5	CHAMBRE PRINCIPALE	12'-8"	X	10'-6"
6	CHAMBRE #2	9'-2"	X	9'-0"
7	SALLE DE BAIN	7'-10"	X	9'-4"
8	CHAMBRE #3	11'-6"	X	9'-0"
9	GARAGE	14'-6"	X	22'-7"

SUPERFICIES

MAISON 814 PI²
GARAGE 375 PI²

HAUTEUR PLAFOND 8'-0"



PLAN D'AMÉNAGEMENT - REZ-DE-CHAUSSÉE

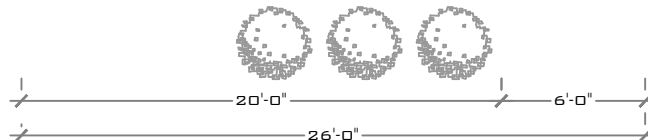
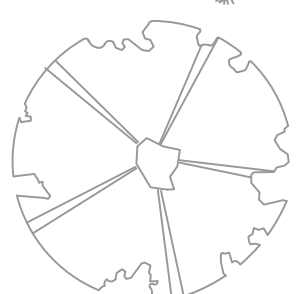
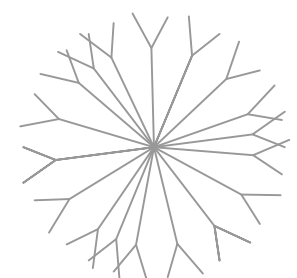
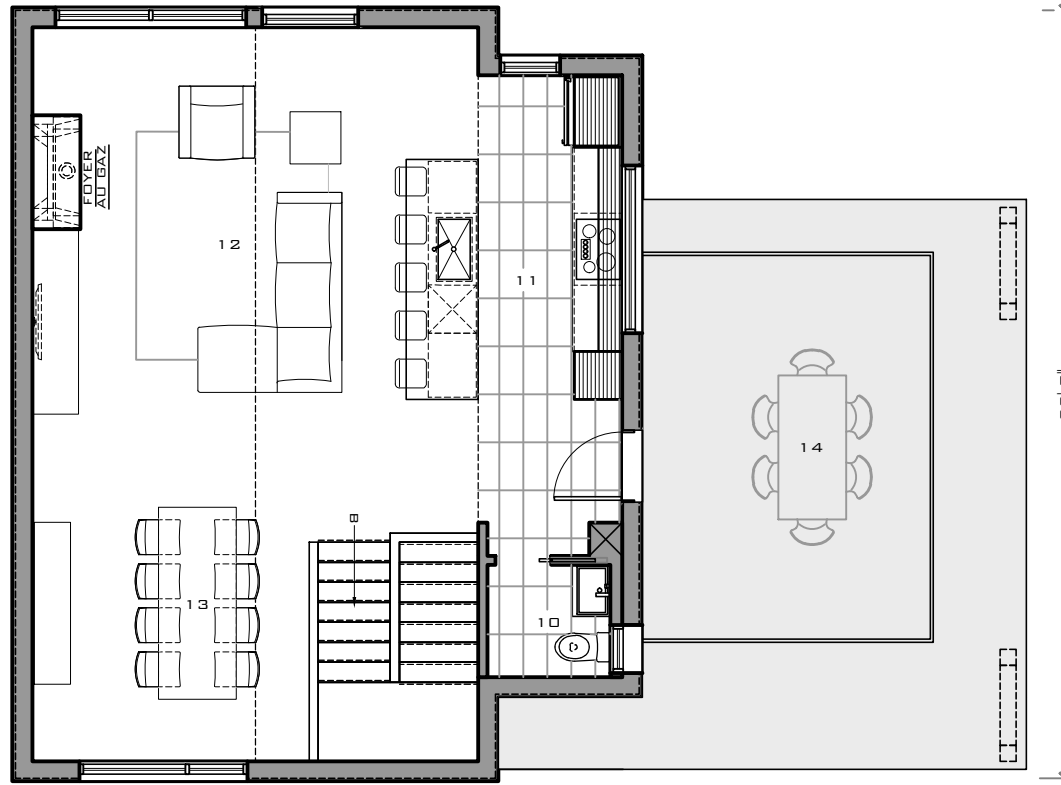
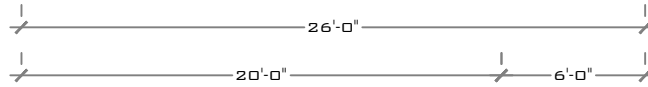
FREYA

UNIFAMILIAL - TYPE C (ABRI AUTO)

- 10 SALLE D'EAU 5'-2" X 4'-8"
- 11 CUISINE 9'-6" X 18'-7"
- 12 SÉJOUR 15'-2" X 16'-2"
- 13 SALLE À MANGER 11'-8" X 14'-5"
- 14 TERRASSE 12'-0" X 16'-0"

SUPERFICIES

MAISON 814 PI²
 PLAFOND CATHÉDRAL, +/- 17'-0"
 LA FENESTRATION DE L'ÉTAGE S'ADAPTE SELON
 L'ORIENTATION DE LA VUE SUR LA MONTAGNE



PLAN D'AMÉNAGEMENT - ÉTAGE

FREYA

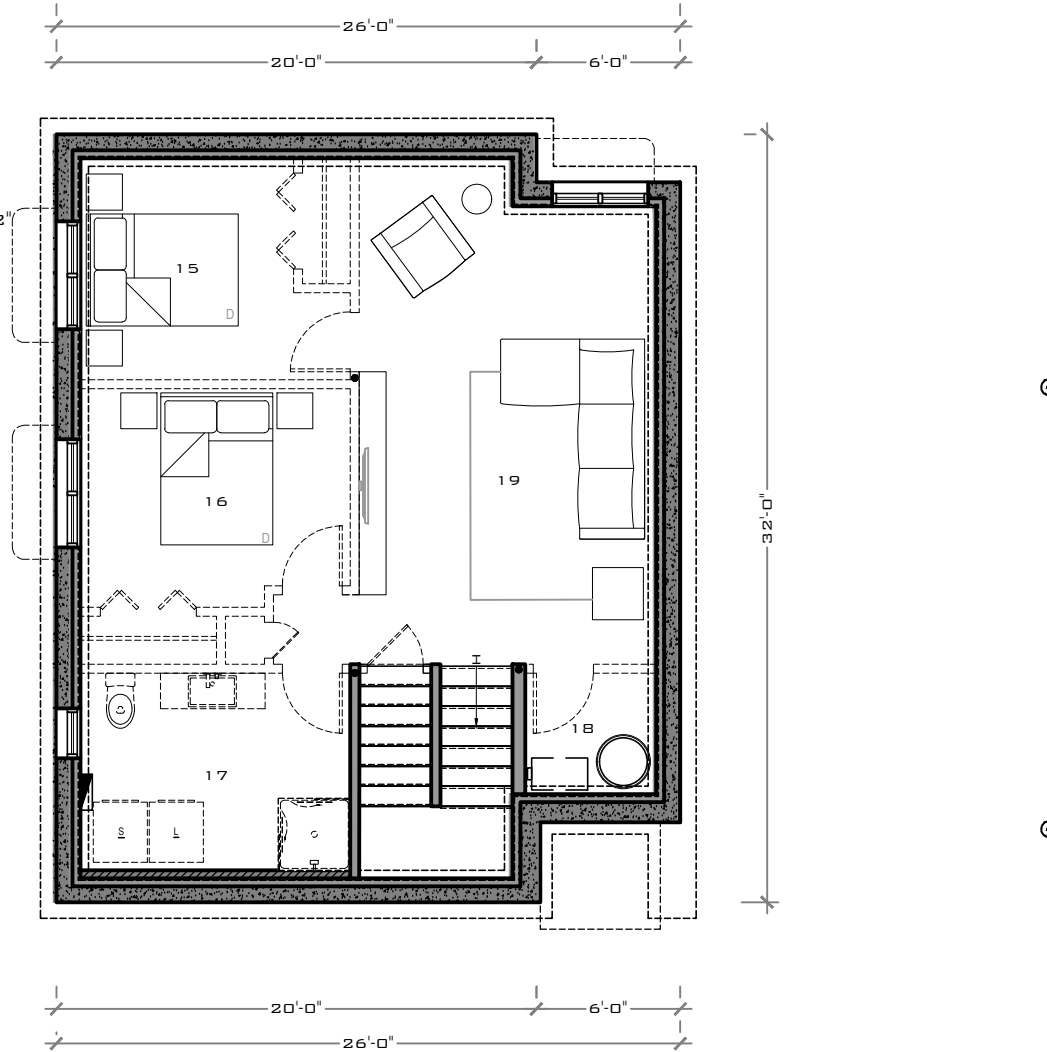
UNIFAMILIAL - TYPE C (ABRI AUTO)

- 15 CHAMBRE #4
- 16 CHAMBRE #5
- 17 SALLE DE BAIN
- 18 MÉCANIQUE
- 19 SALLE FAMILIALE

SUPERFICIES

MAISON 800 PI²

- 9'-0" X 9'-3"
- 11'-5" X 8'-3"
- 11'-3" X 8'-2"
- 5'-6" X 5'-0"
- 12'-3" X 19'-2"



PLAN D'AMÉNAGEMENT - SOUS-SOL

FREYA

UNIFAMILIAL - TYPE C (ABRI AUTO)

NØRR

QUARTIER D'ARCHITECTURE SCANDINAVE



FREYA

UNIFAMILIAL - TYPE C (ABRI AUTO)

©Tous droits réservés

TALO

CHABOT
CONSTRUCTION *Chabot*



CORTEN
CONSTRUCTION