

NØRR

QUARTIER D'ARCHITECTURE SCANDINAVE



FREYA

UNIFAMILIAL - TYPE C (ABRI AUTO)

©Tous droits réservés

TALO

CHABOT
CONSTRUCTION *Chabot*



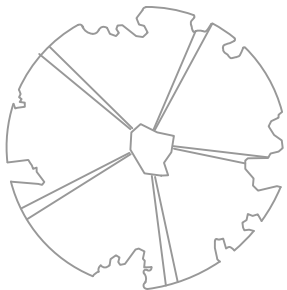
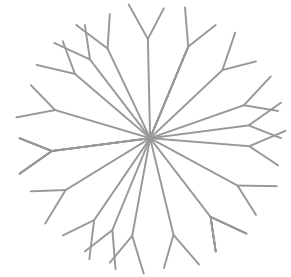
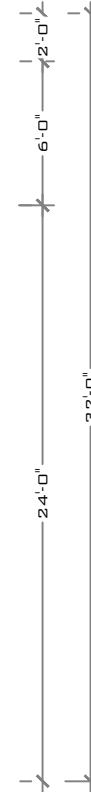
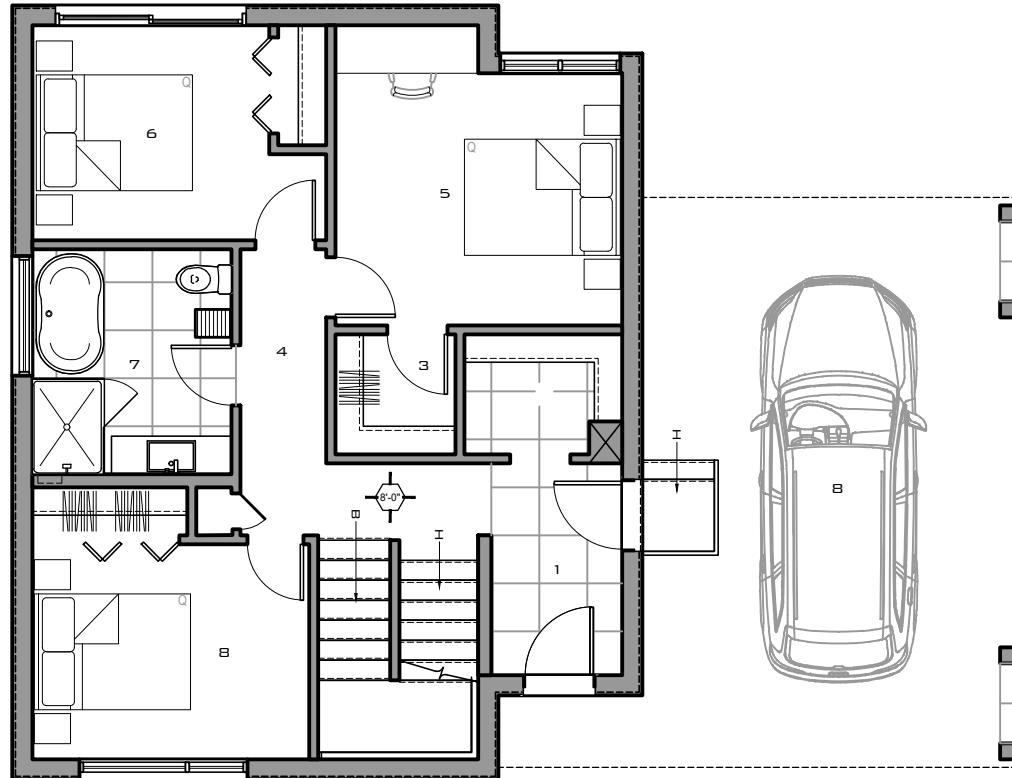
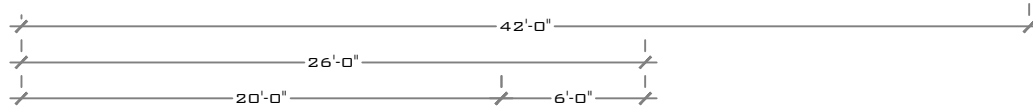
CORTEN
CONSTRUCTION

- | | | | | |
|---|--------------------|--------|---|---------|
| 1 | HALL D'ENTRÉE | 5'-6" | X | 8'-10" |
| 2 | WALK-IN | 6'-7" | X | 5'-0" |
| 3 | WALK-IN | 5'-0" | X | 5'-0" |
| 4 | CIRCULATION | 3'-7" | X | 11'-11" |
| 5 | CHAMBRE PRINCIPALE | 12'-0" | X | 10'-6" |
| 6 | CHAMBRE #2 | 9'-11" | X | 9'-0" |
| 7 | SALLE DE BAIN | 8'-4" | X | 9'-5" |
| 8 | CHAMBRE #3 | 9'-0" | X | 14'-7" |
| 9 | GARAGE | 14'-6" | X | 22'-7" |

SUPERFICIES

MAISON 814 PI²
GARAGE 375 PI²

HAUTEUR PLAFOND 8'-0"



PLAN D'AMÉNAGEMENT - REZ-DE-CHAUSSÉE

FREYA

UNIFAMILIAL - TYPE C (ABRI AUTO)

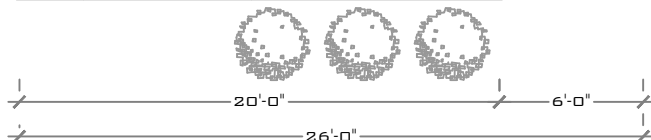
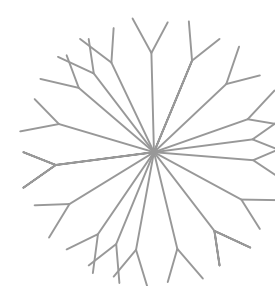
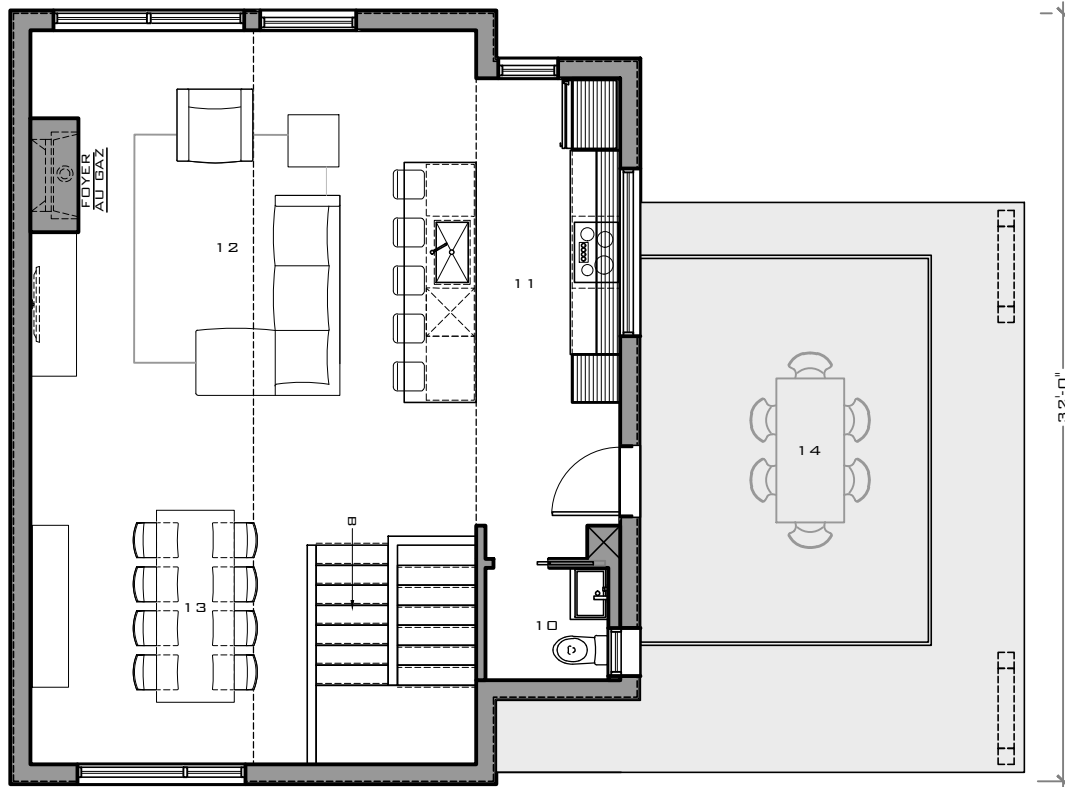
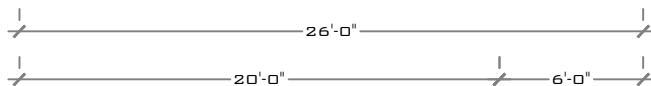
10	SALLE D'EAU	5'-2"	X	4'-8"
11	CUSINE	9'-6"	X	18'-7"
12	SÉJOUR	15'-2"	X	16'-2"
13	SALLE À MANGER	11'-8"	X	14'-5"
14	TERRASSE	12'-0"	X	16'-0"

SUPERFICIES

MAISON 814 PI²

PLAFOND CATHÉDRAL, +/- 17'-0"

LA FENESTRATION DE L'ÉTAGE S'ADAPTE SELON L'ORIENTATION DE LA VUE SUR LA MONTAGNE



PLAN D'AMÉNAGEMENT - ÉTAGE

FREYA

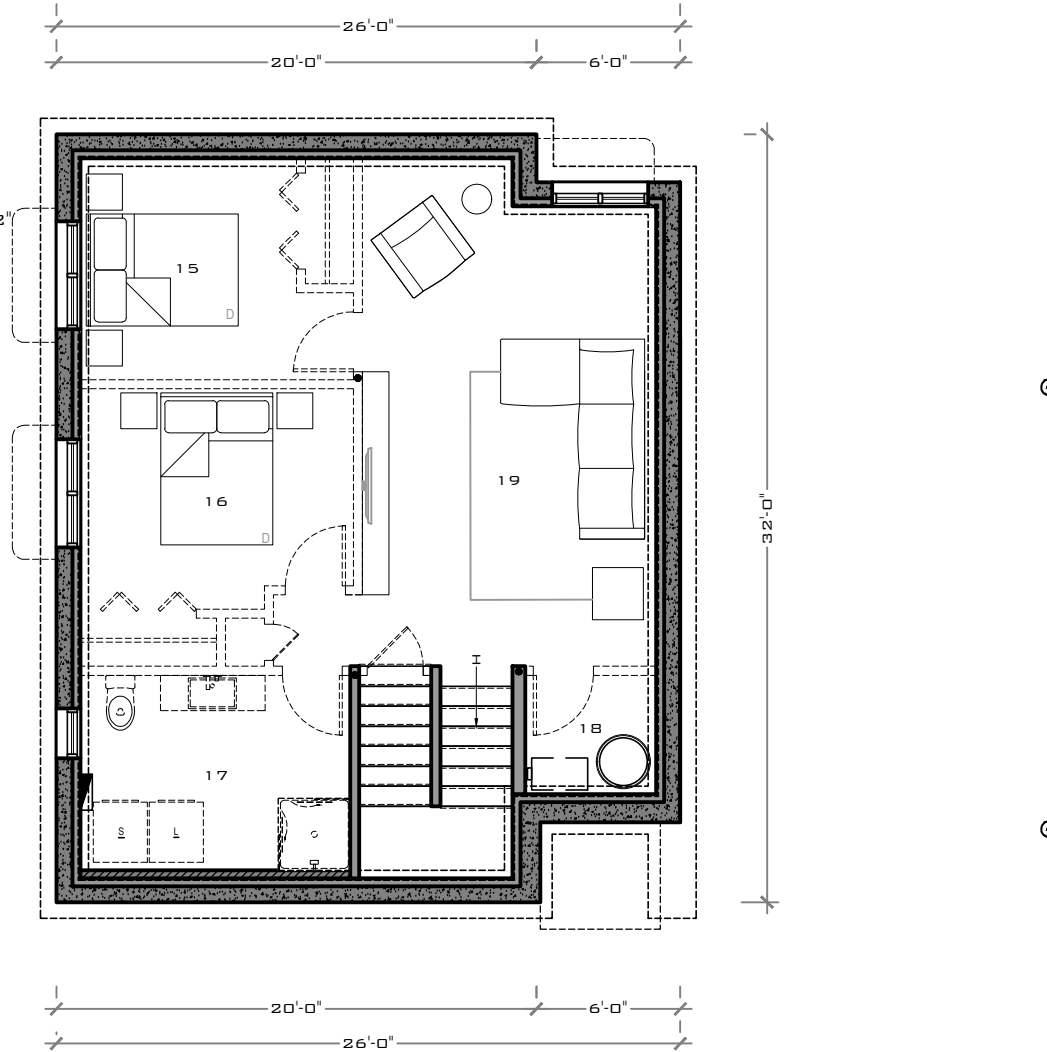
UNIFAMILIAL - TYPE C (ABRI AUTO)

- 15 CHAMBRE #4
- 16 CHAMBRE #5
- 17 SALLE DE BAIN
- 18 MÉCANIQUE
- 19 SALLE FAMILIALE

SUPERFICIES

MAISON 800 PI²

- 9'-0" X 9'-3"
- 11'-5" X 8'-3"
- 11'-3" X 8'-2"
- 5'-6" X 5'-0"
- 12'-3" X 19'-2"



PLAN D'AMÉNAGEMENT - SOUS-SOL

FREYA

UNIFAMILIAL - TYPE C (ABRI AUTO)

NØRR

QUARTIER D'ARCHITECTURE SCANDINAVE



FREYA

UNIFAMILIAL - TYPE C (ABRI AUTO)

©Tous droits réservés

TALO

CHABOT
CONSTRUCTION



CORTEN
CONSTRUCTION