

NØRR

QUARTIER D'ARCHITECTURE SCANDINAVE



FREYA

UNIFAMILIAL - TYPE B (VUE AVANT)

©Tous droits réservés

TALO

CHABOT
CONSTRUCTION *Chabot*



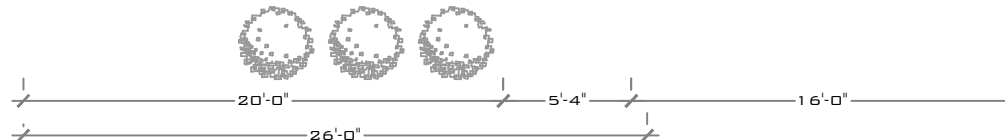
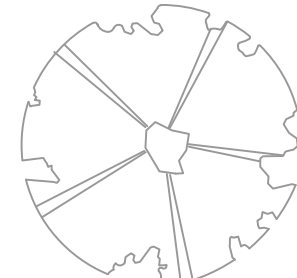
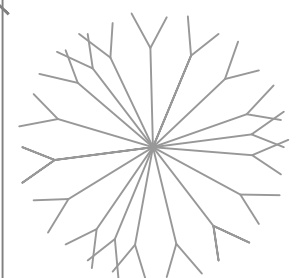
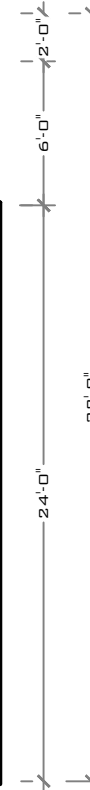
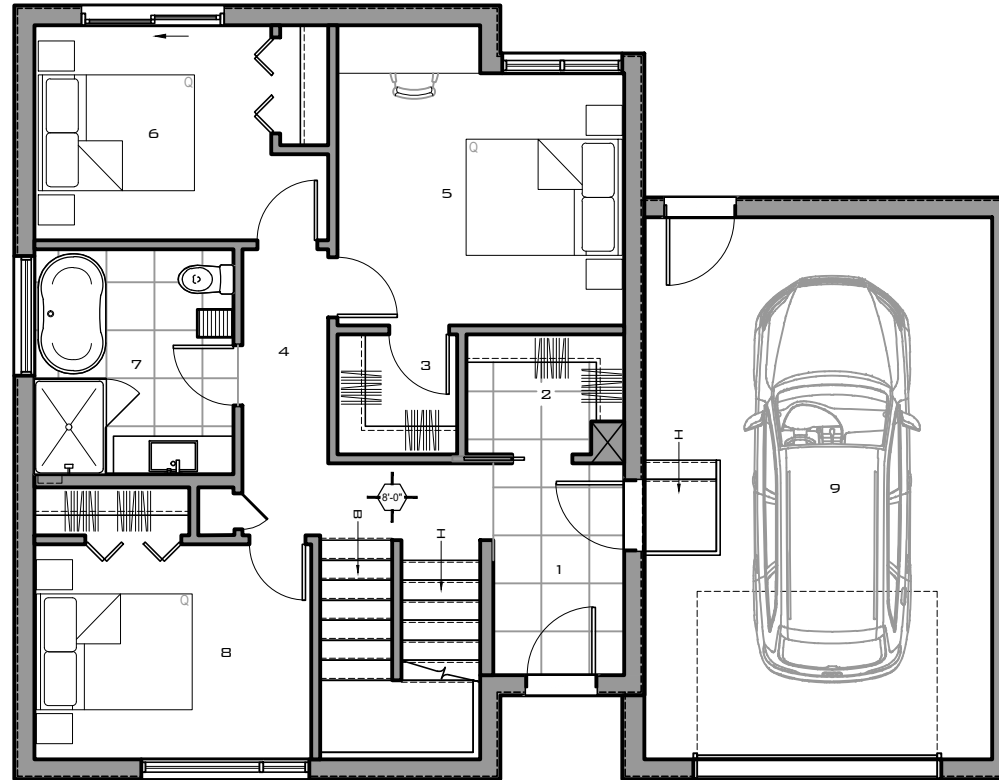
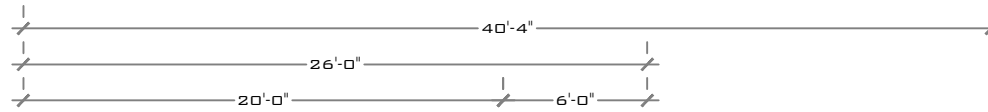
CORTEN
CONSTRUCTION

1	HALL D'ENTRÉE	5'-6"	X	8'-10"
2	WALK-IN	6'-7"	X	5'-0"
3	WALK-IN	5'-0"	X	5'-0"
4	CIRCULATION	3'-7"	X	11'-11"
5	CHAMBRE PRINCIPALE	12'-0"	X	10'-6"
6	CHAMBRE #2	9'-11"	X	9'-0"
7	SALLE DE BAIN	8'-4"	X	9'-5"
8	CHAMBRE #3	9'-0"	X	14'-7"
9	GARAGE	14'-6"	X	22'-7"

SUPERFICIES

MAISON 814 PI²
GARAGE 375 PI²

HAUTEUR PLAFOND 8'-0"



PLAN D'AMÉNAGEMENT - REZ-DE-CHAUSSÉE

FREYA

UNIFAMILIAL - TYPE B (VUE AVANT)

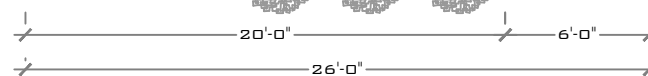
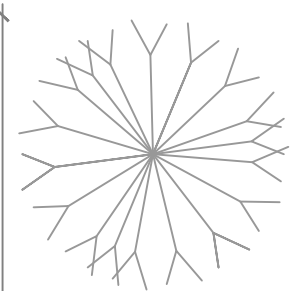
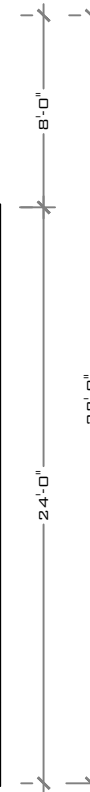
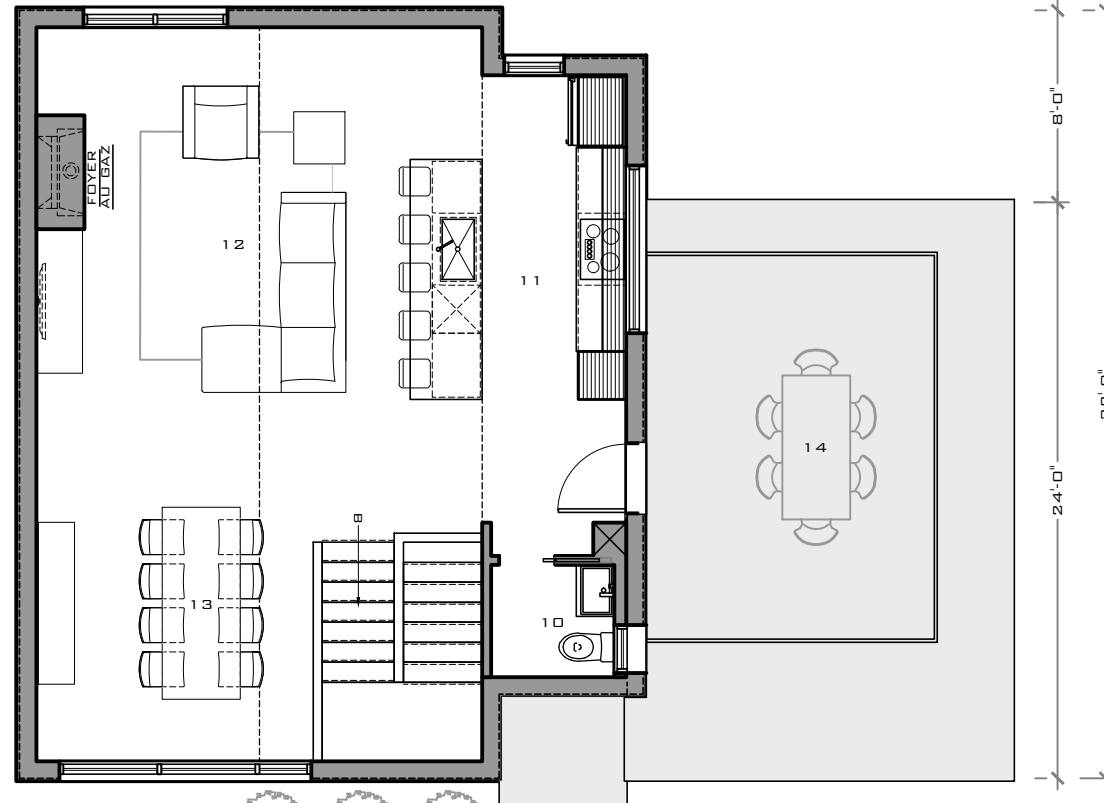
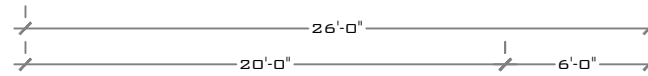
10	SALLE D'EAU	5'-2"	X	4'-8"
11	CUISINE	9'-6"	X	18'-7"
12	SÉJOUR	15'-2"	X	16'-2"
13	SALLE À MANGER	11'-8"	X	14'-5"
14	TERRASSE	12'-0"	X	16'-0"

SUPERFICIES

MAISON 814 PI²

PLAFOND CATHÉDRALE, +/- 17'-0"

LA FENESTRATION DE L'ÉTAGE S'ADAPTE SELON L'ORIENTATION DE LA VUE SUR LA MONTAGNE



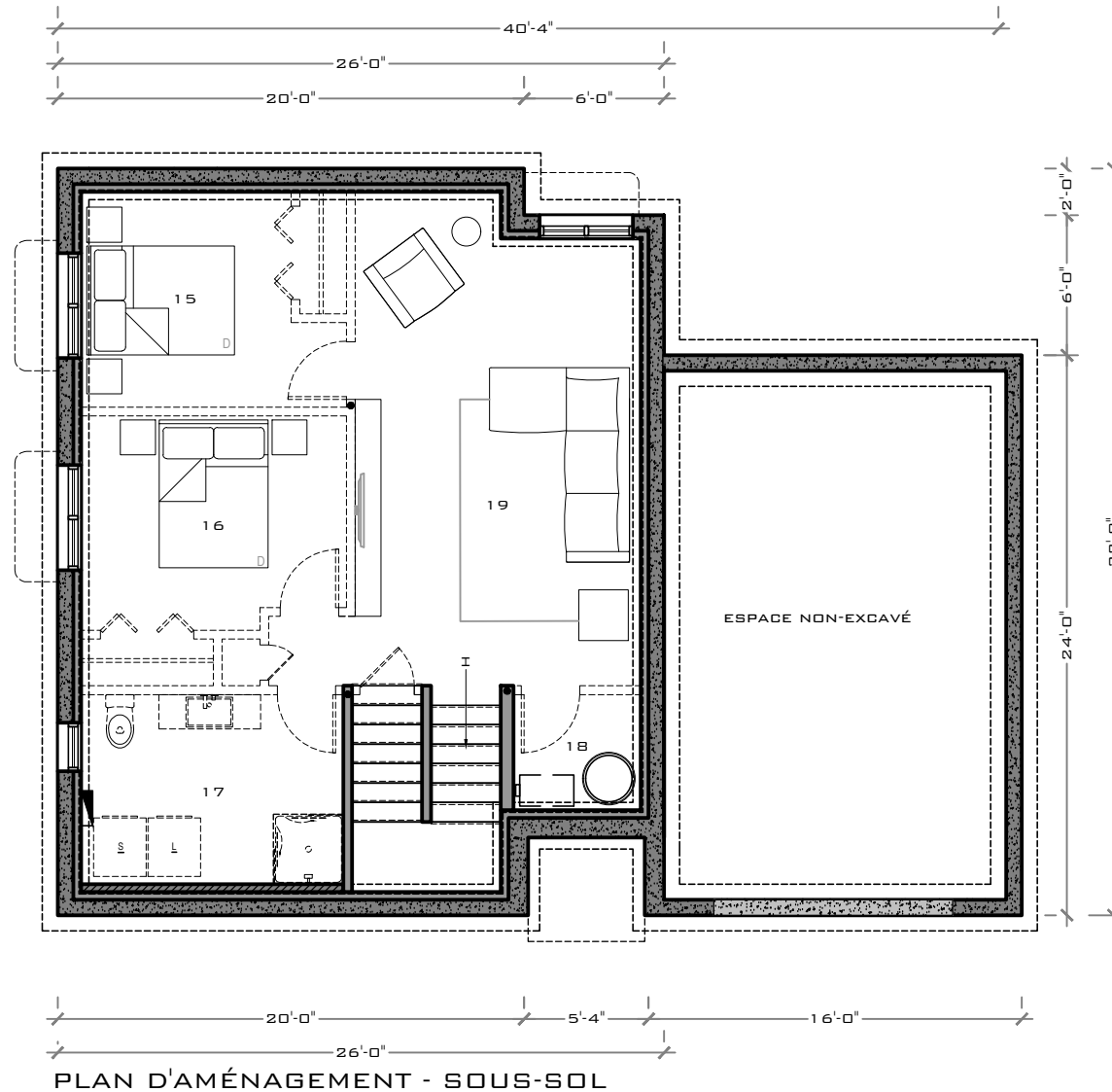
FREYA

UNIFAMILIAL - TYPE B (VUE AVANT)

- | | |
|--------------------|-----------------|
| 15 CHAMBRE #4 | 9'-0" X 9'-3" |
| 16 CHAMBRE #5 | 11'-5" X 8'-3" |
| 17 SALLE DE BAIN | 11'-3" X 8'-2" |
| 18 MÉCANIQUE | 5'-6" X 5'-0" |
| 19 SALLE FAMILIALE | 12'-3" X 19'-2" |

SUPERFICIES

MAISON 800 PI²



FREYA

UNIFAMILIAL - TYPE B (VUE AVANT)

NØRR

QUARTIER D'ARCHITECTURE SCANDINAVE



FREYA

UNIFAMILIAL - TYPE B (VUE AVANT)

©Tous droits réservés

TALO

CHABOT
CONSTRUCTION *Chabot*



CORTEN
CONSTRUCTION